

Women Empowering Women: Civil Society & Local Governments

Czarina Medina-Guce, MA

Political Governance Fellow, Institute for Leadership, Empowerment, and Democracy (iLEAD)
czarinamedinaguce@gmail.com

CALD Conference & Workshop; 11 August 2017



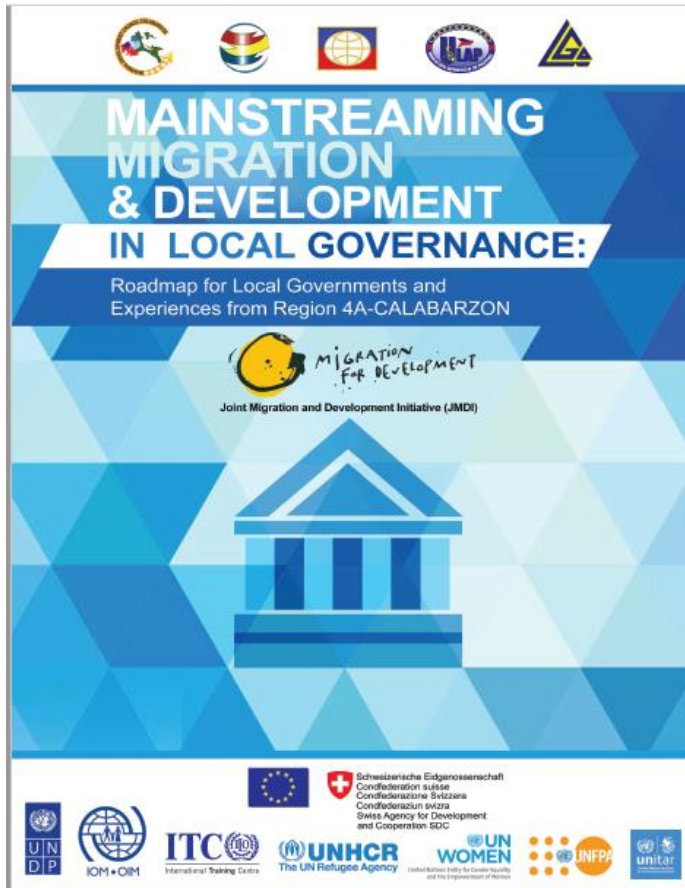
Local
Development
Councils

Gender and
Development
Mainstreaming

Seal of Good
Local Governance
(Social Protection)

Table 4. Mainstreaming Migration and Development in Local Governance

ACTORS	LEADERSHIP	FINANCING	HUMAN RESOURCE	DATA AND COMMUNICATIONS	SERVICE DELIVERY (ISE/ PSYCHOSOCIAL)
<p>LOCAL GOVERNMENTS</p> <p>PROVINCIAL GOVERNMENT (Executive and Legislative)</p>	<p>Plans and strategies: <i>Where is M&D?</i></p> <ul style="list-style-type: none"> ✓ Provincial Development Plans (PDP) ✓ Annual Investment Plans (AIP) ✓ Annual Procurement Plans (APP) ✓ Executive-Legislative Agenda (ELA) <p>Legislative Action</p> <ul style="list-style-type: none"> ✓ Executive Orders ✓ Provincial Ordinances ✓ Resolutions <p>Legislated Migrant Resource Center within LGU</p> <ul style="list-style-type: none"> ✓ One-stop center for all migrant needs (i.e., legal, social security, ISE, psychosocial, help desk, etc.) <p>Migrant Representation in Local Development Council</p>	<p>A. Access to/ Availability of Resources</p> <p>Funds</p> <ul style="list-style-type: none"> ✓ Appropriation ✓ Legislation ✓ Actual budget ✓ Supplemental budget ✓ GAD Budget <p>Development Grants (Optional)</p> <ul style="list-style-type: none"> ✓ Financial assistance from outside partners (World Bank, Asian Development Bank, etc.) <p>National Loans/ Grants (Optional)</p> <p>Other funding options (BuB, Bureau of Local Government Finance, etc.)</p> <p>B. Spending/ Utilization</p> <ul style="list-style-type: none"> ✓ Procurement ✓ Workplan ✓ Actual Spending 	<p>A. Manpower/ Personnel</p> <ul style="list-style-type: none"> ✓ Institutionalized or Appointed Focal Agency ✓ Institutionalized or Appointed Focal Person <p>B. Capacity Development (Received)</p> <ul style="list-style-type: none"> ✓ From NGAs: Planning guides Road-maps for M&D Governance ✓ From NGOs: M&D Trainings (for Trainors/ Service Provider) <ul style="list-style-type: none"> • Reintegration • Counselling • Financial Literacy • Case Management • Crisis Intervention • Gender in M&D 	<p>Institutionalization of Information Hub</p> <ul style="list-style-type: none"> ✓ Legislation <p>A. Data Gathering</p> <ul style="list-style-type: none"> • Unified Database • Data Consolidation • Monitoring Tools • CBMS • Data/Statistics from OWWA, DOLE <p>B. Evidence-informed Policy Making</p> <ul style="list-style-type: none"> • Policies (Recommended and Passed) <p>C. Communications</p> <ul style="list-style-type: none"> • Communication Plans • Information-sharing mechanisms 	<p>CONVERGENCE:</p> <p>A. Availability of Investments, Savings and Entrepreneurship</p> <ul style="list-style-type: none"> • Menu of investments • Industry maps • Business packages • Business Expo/ Fairs • Capacity Dev't ✓ Financial Literacy ✓ Livelihood Trainings <p>B. Availability of Psychosocial Services</p> <ul style="list-style-type: none"> • Migrants ✓ Reintegration ✓ Counselling ✓ Crisis Intervention • Families ✓ Reintegration ✓ Responsible Parenthood ✓ Counselling/ Personality Dev't <p>Migrant Organizations</p> <ul style="list-style-type: none"> ✓ Reintegration ✓ Counselling ✓ Crisis Intervention Communities ✓ School-based programs ✓ Other support programs



[Book Link](#)

Focus: Batangas Case

Table 9. Top Sending Municipalities of Batangas, based on OWWA 4A 2015 Data

Province and Municipality	ACTIVE								ACTIVE TOTAL
	Land-Based			TOTAL	Sea-Based			TOTAL	
	Male	Female	Not Stated		Male	Female	Not Stated		
BATANGAS	41,574	51,279	3	92,856	265	3,481	1	3,747	96,603
Batangas City	5,093	11,082		16,175	39	555		594	16,769
Lipa City	4,151	4,071		8,222	29	219		248	8,470
Bauan	1,651	3,947		5,598	11	174		185	5,783
San Pascual	1,069	3,156		4,225	8	100		108	4,333
Lemery	2,071	1,688		3,759	19	123		142	3,901

Percent Female

55.22 %

92.90 %

56.69 %



Republic of the Philippines

DEPARTMENT OF THE INTERIOR AND LOCAL GOVERNMENT

DILG-NAPOLCOM Center, EDSA corner Quezon Avenue, West Triangle, Quezon City

<http://www.dilg.gov.ph>



**2017 SEAL OF GOOD LOCAL GOVERNANCE:
PAGKILALA SA KATAPATAN AT KAHUSAYAN NG PAMAHALAANG LOKAL**

Memorandum Circular No.: 2017-53
March 22, 2017

1. Prefatory Statement

Gobyernong may malasakit tungo sa pagbabago at patuloy na pag-unlad!

The Seal of Good Local Governance (SGLG) symbolizes integrity and good governance through continuing governance reform and sustained local development through a progressive assessment system adopted by the Department to give due recognition to remarkable local government performance across several areas.

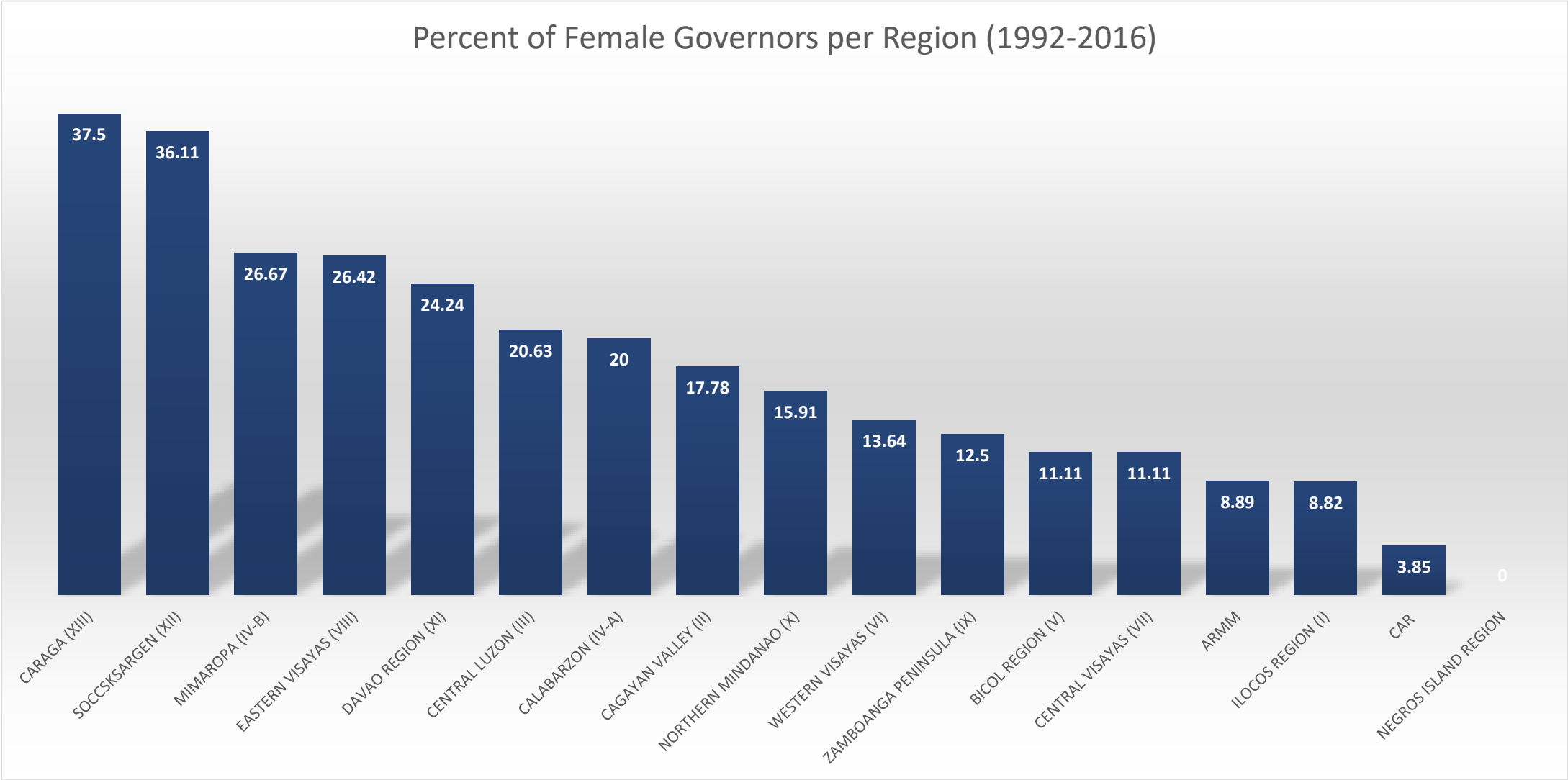
[Memorandum Circular Link](#)

3. Social Protection

- 3.1 80% completion rate of or utilization rate of the fund intended for the 2016 Local School Board Plan
- 3.2 Updated Local Code for Children
- 3.3 2016 Philhealth-accredited provincial hospital
- 3.4 *Presence of mechanisms in support of gender and development (meets at least 4 of the following):*
 - 3.4.1 2016 GAD Accomplishment Report
 - 3.4.2 CY 2017 GAD Plan and Budget submitted to DILG-FO for review
 - 3.4.3 Presence of updated GAD Code
 - 3.4.4 Presence of GAD database
 - 3.4.5 LGU GAD focal point system
- 3.5 Compliance with Accessibility Law, i.e., provision of ramps with handrails at the entrance/exit, special lift/elevator, as applicable, and wheelchair-accessible toilets with grab bars in the provincial capitol and main provincial hospital
- 3.6 Compliance with mandatory representation in the sanggunian with representative accorded with the regular privileges and emoluments of a sanggunian member
- 3.7 At least one accredited LGU-managed residential care facility for the vulnerable sectors (e.g. women, children, senior citizens and PWDs)
- 3.8 LSWDO is a registered social worker, or in the case where the head of Office was hired prior to the enactment of RA 9433 or the Magna Carta for Social Workers, there must be at least a registered social worker serving as technical staff in the office.

Female Governors in the Philippines (1992 to 2016)

**Generated from COMELEC list of winners*



Female Governors in the Philippines (1992 to 2016)

**Generated from
COMELEC list of
winners*

Regions	Total Female Governors in Region (1992- 2016)	Total Number of Governors in Region (1992- 2016)	Percent of Female Governors in Region (1992- 2016)
CORDILLERA ADMINISTRATIVE REGION (CAR)	2	52	3.85%
ILOCOS REGION (I)	3	34	8.82%
CAGAYAN VALLEY (II)	8	45	17.78%
CENTRAL LUZON (III)	13	63	20.63%
CALABARZON (IV-A)	9	45	20.00%
MIMAROPA (IV-B)	12	45	26.67%
BICOL REGION (V)	6	54	11.11%
WESTERN VISAYAS (VI)	6	44	13.64%
CENTRAL VISAYAS (VII)	3	27	11.11%
EASTERN VISAYAS (VIII)	14	53	26.42%
ZAMBOANGA PENINSULA (IX)	3	24	12.50%
NORTHERN MINDANAO (X)	7	44	15.91%
DAVAO REGION (XI)	8	33	24.24%
SOCCSKSARGEN (XII)	13	36	36.11%
CARAGA (XIII)	15	40	37.50%
AUTONOMOUS REGION IN MUSLIM MINDANAO (ARMM)	4	45	8.89%
NEGROS ISLAND REGION	0	18	0.00%
TOTALS	113	571	19.79%

