

Catalyzing *Sustainable* Local Actions with *Smart* Solutions

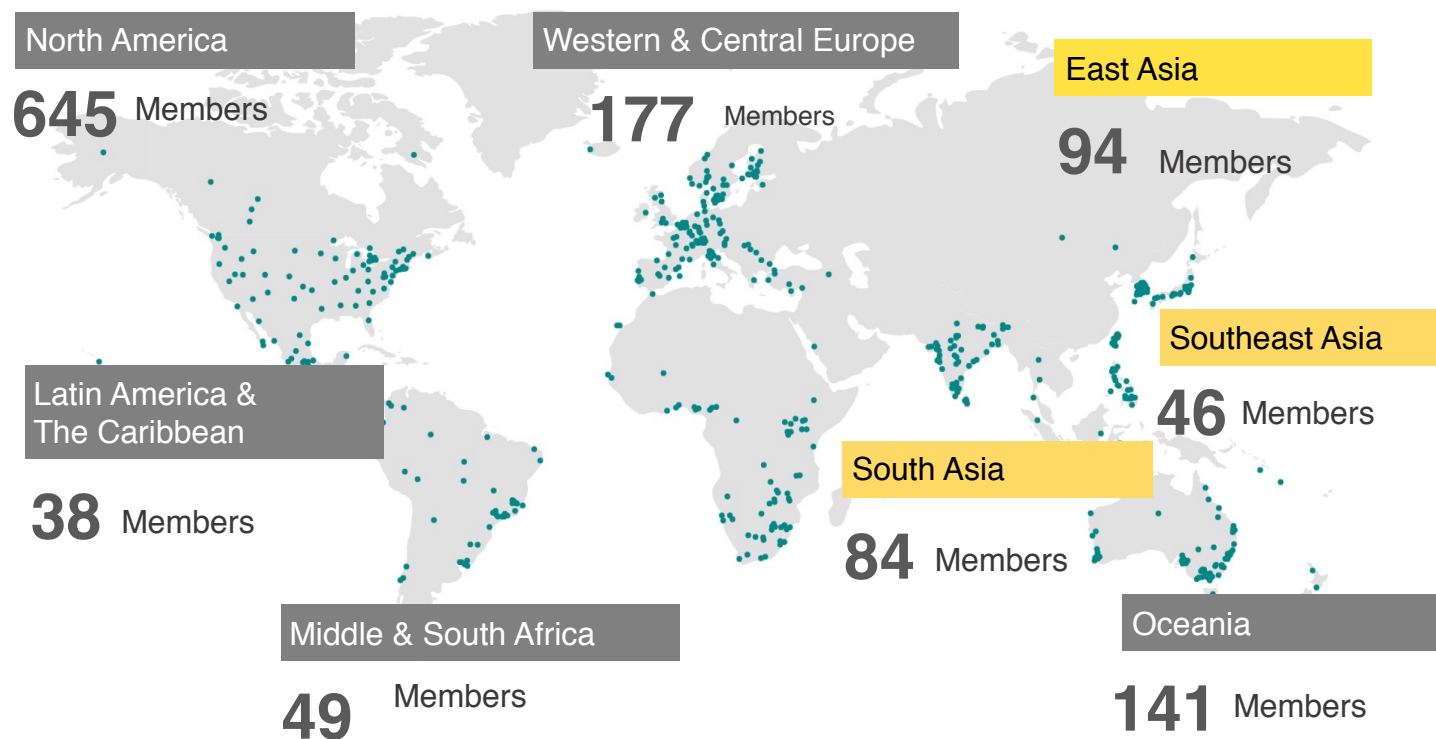


Yisheng Yang, ICLEI KCC, Program Manager



Who we are

ICLEI is a world-leading association of over 1,700 cities in 124 countries, dedicated to promoting global sustainability through local action.



In
124+
countries

850+
million
people

> 37%
of the global
urban
population

ICLEI around the world



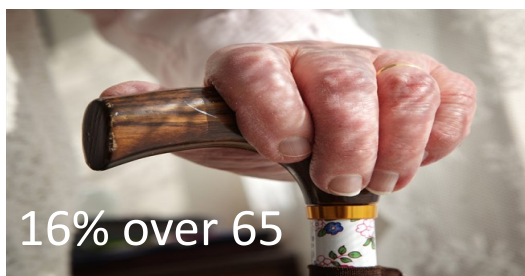
260+ staff in 22 offices

Why we act

By 2050, two-thirds of the world's population will be living cities



+ 1.5M people every week



Cities on the Globe

Cities is the **origin of problems**, but also the **providers of solutions**.

75%

of Global Energy
Consumption
and GHG Emissions

54%

of the World's
Population



80%

of Global GDP

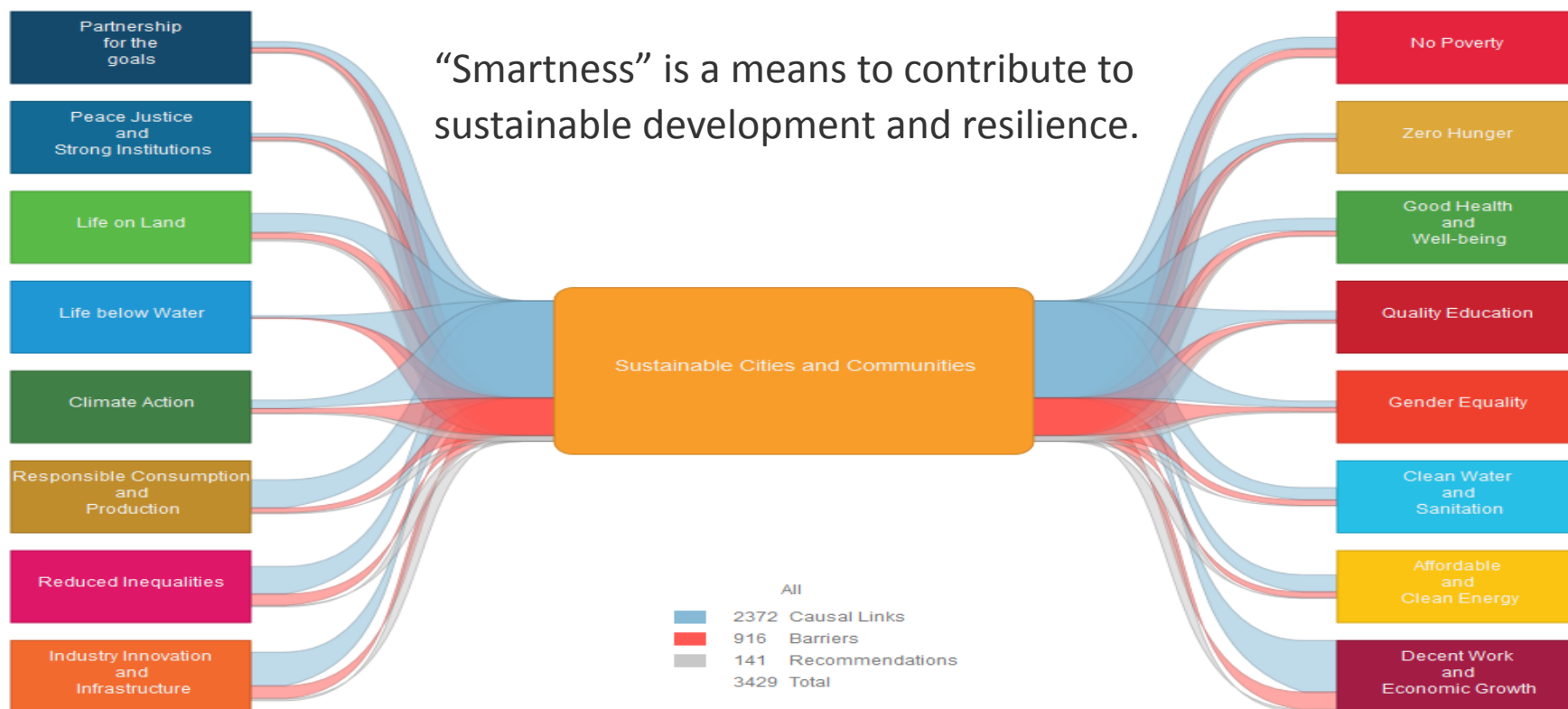
63%

of the World's Venture
Capital Investment

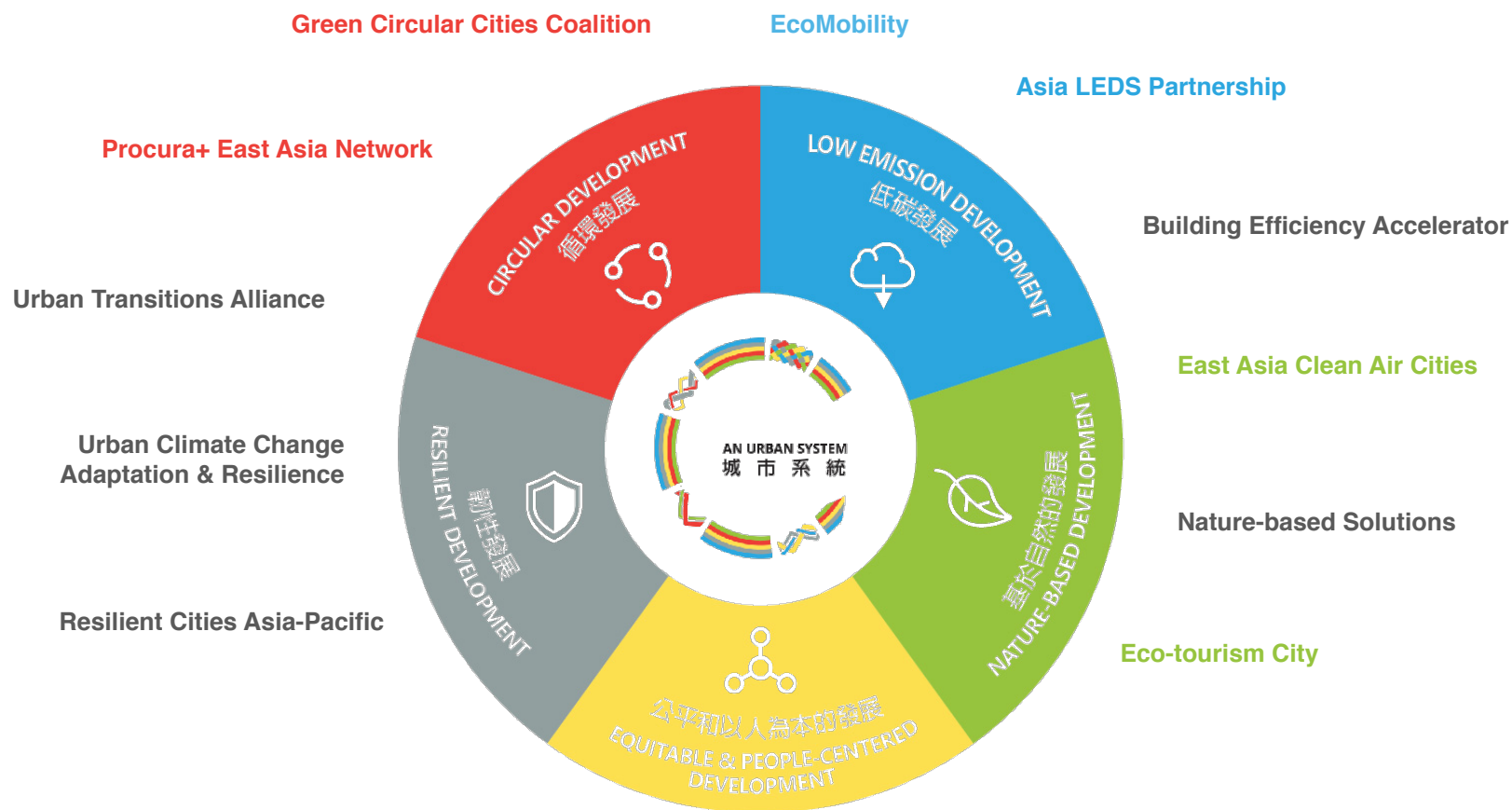
The challenge is the “Sustainability”



A city is not sustainable, is not “Smart”



ICLEI's Vision: 5 Pathways



Smart City?

ICLEI's "Smart" City Approach

Urban Sustainability
& Quality of Life

Normative goal

Efficiency

Innovation

**Methodological
approach**

Systems integration

eg. Urban Nexus

New models for governance and economy

Alternatives: Nature-based, People-centered

Practical means

IoT

Digitalization

Technology

Catalyzing Smart City



i. Peer-Learning and Exchange

- ◆ Smart urban sustainability
- ◆ Overarching solutions
- ◆ Cross-cutting partnership
- ◆ Awareness raising

Renewable energy and energy efficiency (green building)

Resource efficiency and circular economy

Green infrastructure (nature-based solutions)

Climate smart (LED)

Human-centered (quality of life, aging)

Sustainable mobility

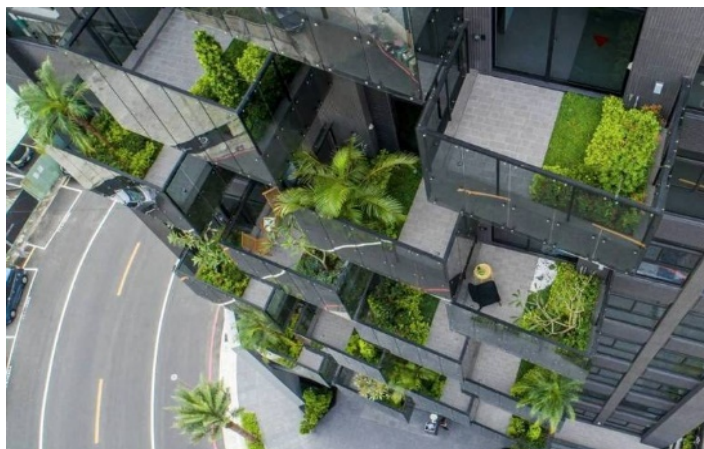
Public engagement

Sustainable procurement



Case study

Climate Smart Infrastructure/ Building



KaoHaus

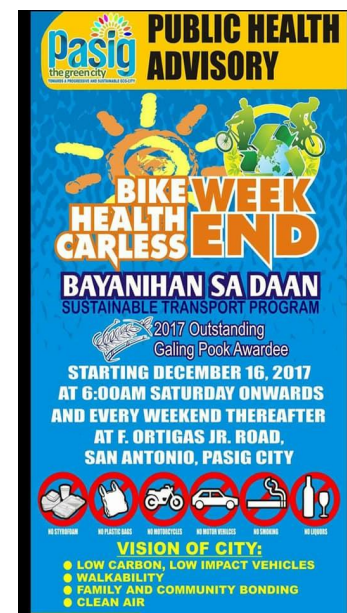
Kaohsiung City,
Taiwan

Case study Sustainable Mobility



Share the Road

Pasig City,
Philippines



Case study

Smart and Healthy Cities



Search



Menu

Welcome to Safeswim

Check before you swim

Tirohia i mua i to kauhoe

Safeswim provides you with water quality forecasts and up-to-date information on risks to your health and safety at 84 beaches and 8 freshwater locations around Auckland. Safeswim is a joint initiative between Auckland Council, Watercare, Surf Lifesaving Northern Region and the Auckland Regional Public Health Service.

Find a beach

Search

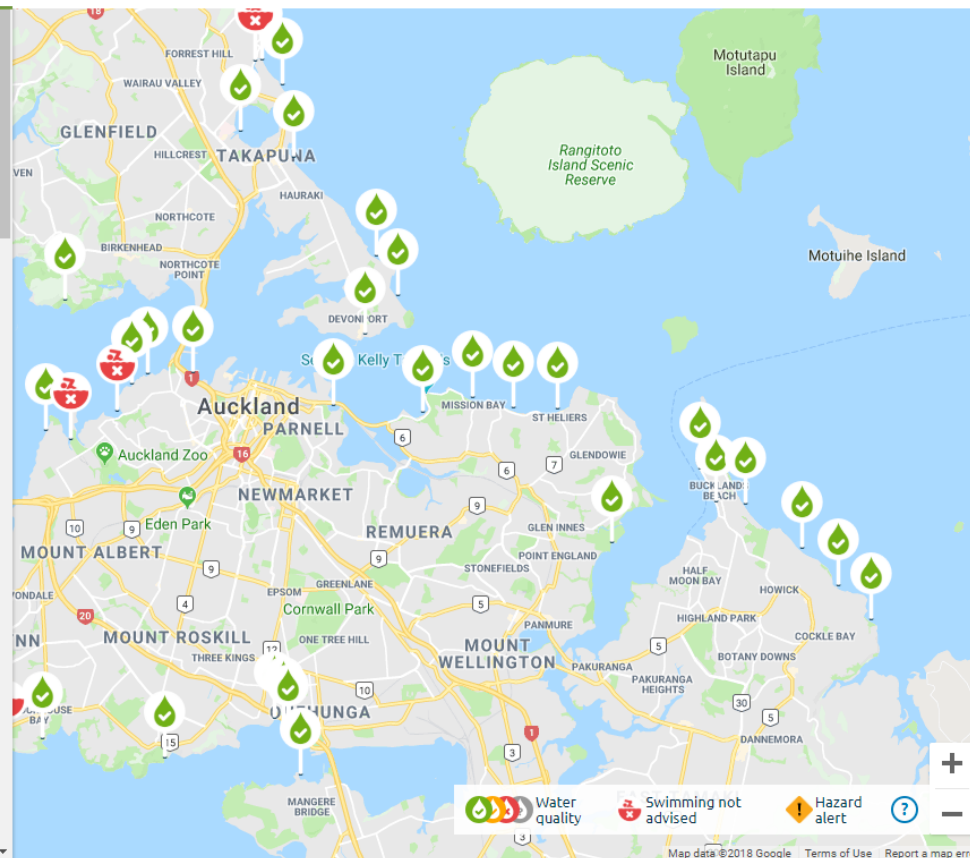


Long-term water quality alerts

Nga mataaratanga roa

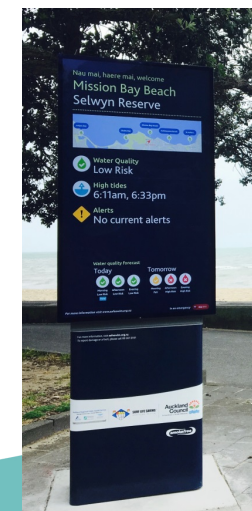
We recommend you don't swim at these spots

- | | |
|----------------------|-------------------|
| Cox's Bay | Meola Reef |
| Little Oneroa Lagoon | Wairau Outlet |
| Piha Lagoon | North Piha Lagoon |

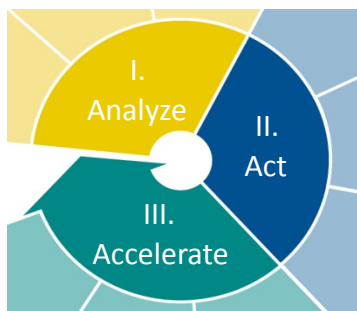


SafeSwim

Auckland City, New Zealand



An integrated approach to LED: support for local governments



GreenClimateCities (GCC)

Comprehensive “how to” methodology for climate mitigation action

www.iclei.org/gcc



Integrate and
mainstream



carbonn® Climate Registry (cCR)

Global reporting platform for commitments, actions and performance

carbonn.org



Transparency



Solutions Gateway

Online platform with guidance on Low Emission Development options

www.solutions-gateway.org



Build capacity
Maximize results

An integrated approach to LED: support for local governments

TAP

Transformative Actions Program (TAP)

Strengthen local projects and improve access to finance

<http://tap-potential.org/>



Enhance, finance, advocate

EcoMobility

Ecomobility Alliance

ICLEI's thematic community on sustainable mobility (peer-to-peer learning & joint activities).

<http://www.iclei.org/>



Sustainable mobility

GPP

Green Public Procurement

Resource center, forum, conference series, training and consultancy

<http://www.sustainable-procurement.org/>



Sustainable purchases and budget

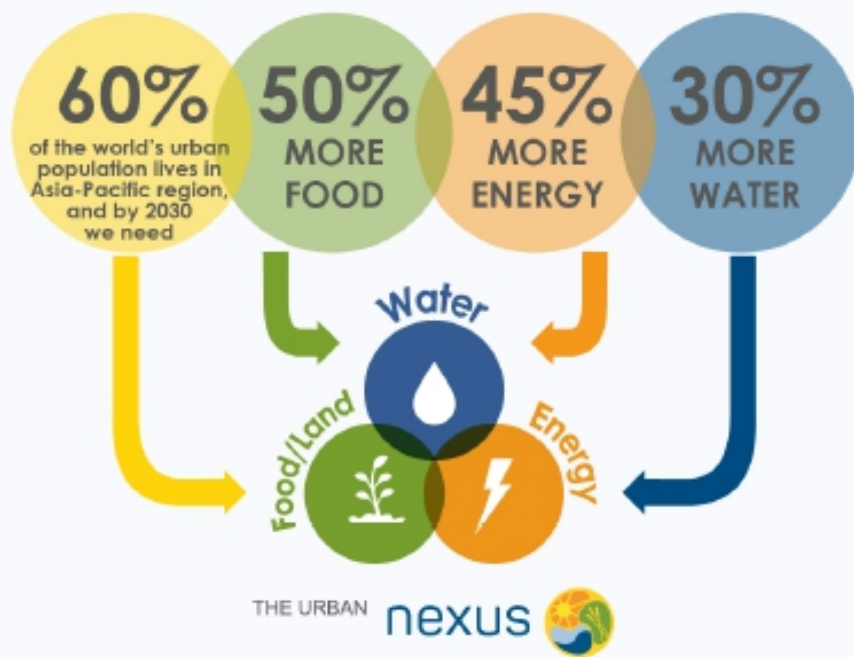
ii. Partnership, City-Business Collaboration



Integrated LED approach

Eg. Urban Nexus

Rapid urbanization endangers the supply of water and sanitation systems, energy, food and land



The Urban Nexus concept is a guiding framework for implementing global development agendas at the local level

The Urban Nexus Wheel examines 5 enabling factors to consider when applying the urban nexus approach



iii. City Finance: TAP

TAP

Transformative
Actions
Program

- First launched in 2015 at COP21, 124 project applications from 41 countries
- Project-pipeline with combined investment need of US\$ 9 billion
- TAP 2.0 launched in 2018 at GCAS
- Managed by ICLEI
- Growing pipeline-growing partnership



Mission

- Enabling access to finance to scale up local climate action
- Accelerating low-to-no emission and climate-resilient development
- Supporting national ambitions through transformative local infrastructure projects



The four TAP pillars

TAP

Transformative
Actions
Program

ICLEI
Local
Governments
for Sustainability

PIPELINE

- Support submissions to the TAP pipeline
- Collect TAP applications
- Conduct early stage project screening: completeness check, basic quality assurance and evaluation of the transformative approach
- Provide feedback and recommendations for improvement
- Provide TAP seal of approval once criteria are met



SERVICES

Project support services with TAP partners, including:

- Facilitate connections to tailor-made services from TAP partners providing technical or financial support
 - Project financeability screening
 - Environmental and social maturity screening
 - Feasibility studies
 - Project Preparation Facilities
 - Guidance on design of sustainable and resilient infrastructure
- Support learning and knowledge exchange and offer capacity building opportunities
- Link to toolkits and guidance
- Provide coaching and mentoring



PLATFORM

- Present short TAP project profile online
- Connect to the more extensive online platform, with structured and unified information for investors and financiers
- Promote TAP partners and their role
- Share good practices and successful access to finance



ADVOCACY

- Inform LGMA constituency messaging by showing opportunities to scale up diverse, cross-sectoral climate action
 - Visibility at key events
 - Aggregation of TAP projects by country, sector, amount in USD bn
- Show subnational contributions to achieve Paris Agreement targets and Sustainable Development Goals
- Promote multilevel governance addressing effective access to finance
- Call for effective financing mechanisms for local action, and coordinate advocacy messaging with the GCoM and CCFLA



Reflections

- ◆ Smart cities are not only about technology but rather about an integrated definition of sustainable development strategies.
- ◆ A balanced approach ensures that the adoption of smart solutions in cities is people-focused, benefits urban citizens and ultimately leads to a safe, inclusive and sustainable future.
- ◆ Smart City Paradoxes
 - Efficiency Increase vs Absolute Consumption
 - Open data vs data management



What we do

Connecting Leaders



Accelerating Local Action



Providing Solutions

TAP | Transformative
Actions
Program

sg. solutionsgateway
Low Carbon Solutions for Urban Development Challenges

carbonn
Climate Registry

Connect with us!



@ICLEI



ICLEI World Secretariat



ICLEI



ICLEI Global



ICLEI-Local Governments for Sustainability



www.iclei.org

 **CityTalk**
A blog by ICLEI
www.talkofthecities.iclei.org

ICLEI Kaohsiung Capacity Center

Email: iclei-Kaohsiung@iclei.org