

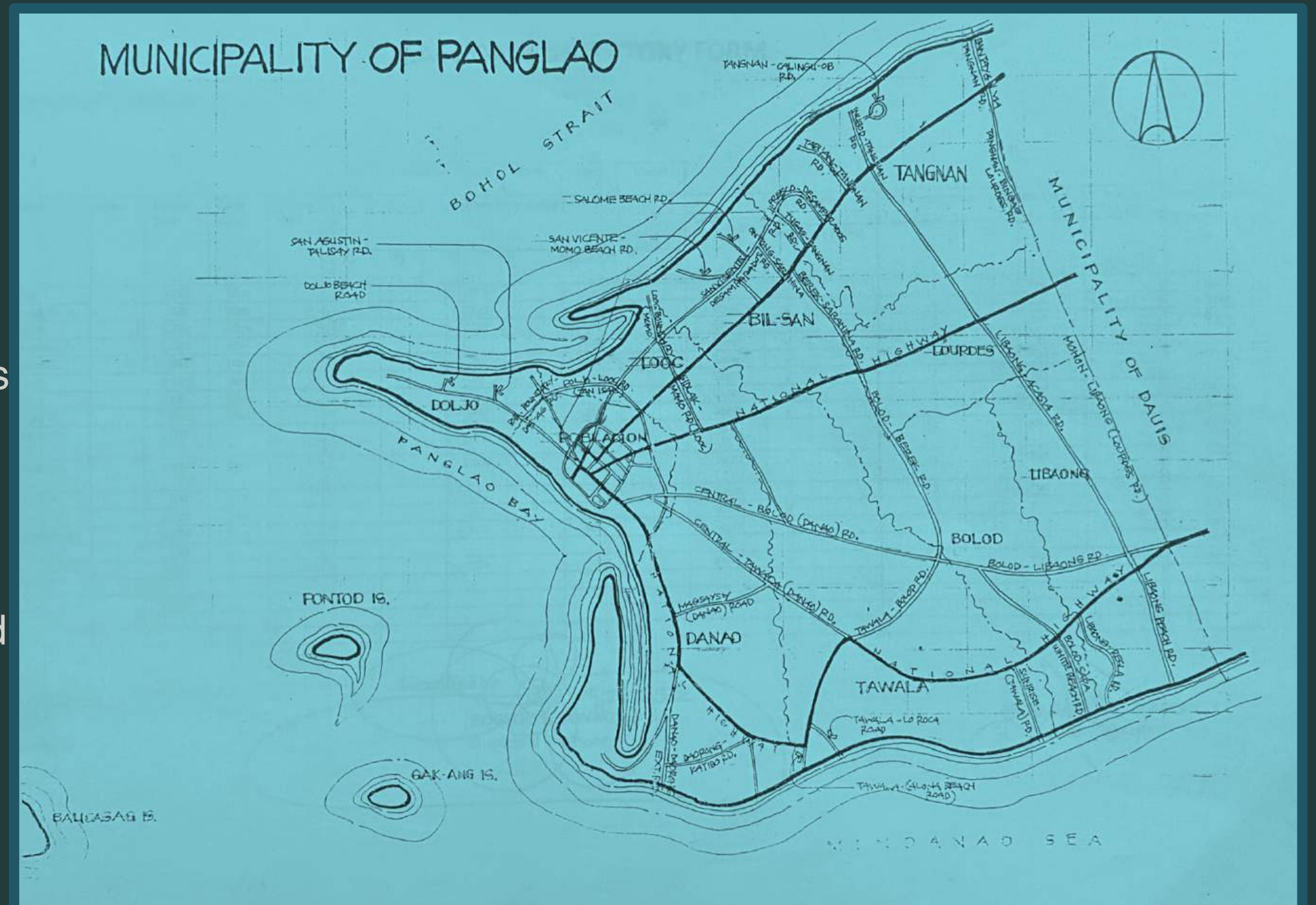


ROAD FACILITIES

in the MUNICIPALITY OF PANGLAO

Overview

Panglao is continuously enhancing its road facilities to improve safety, accessibility, and environmental sustainability. This presentation highlights key road facilities that are being developed and maintained to support the growing needs of the community and tourists alike.



Search here



Paracel Islands

South China Sea

Baguio • Luzon

• Manila

• Batangas

Philippines

Spratly Islands

Panay

Iloilo •

Leyte

• Cebu

Negros

Palawan

• Brooke's Point

Sulu Sea

• Dipolog

Mindanao

• Zamboanga

• Davao

• General Santos



Explore



You



Contribute

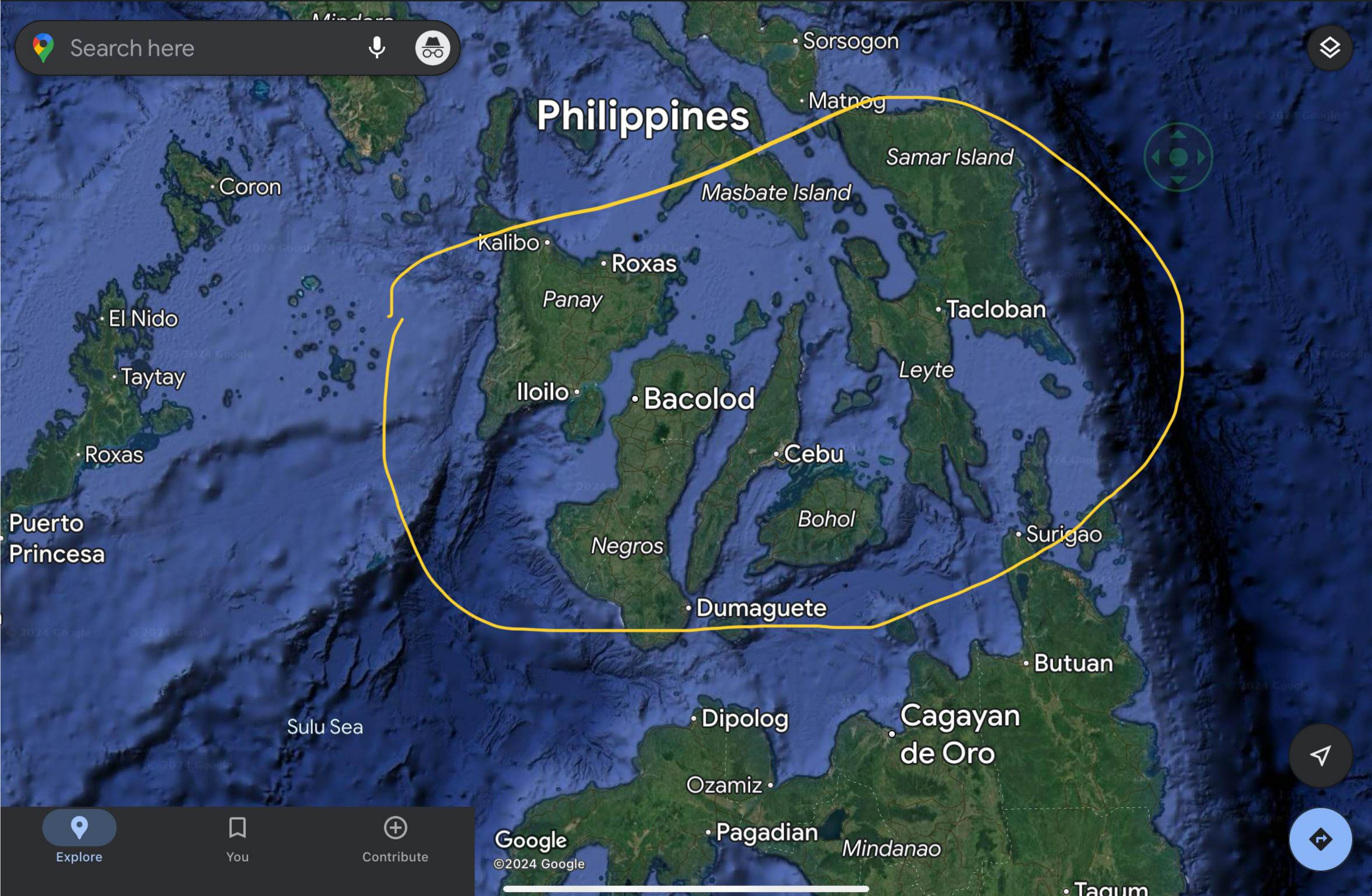
Google

©2024 Google



Search here

Philippines



Explore

You

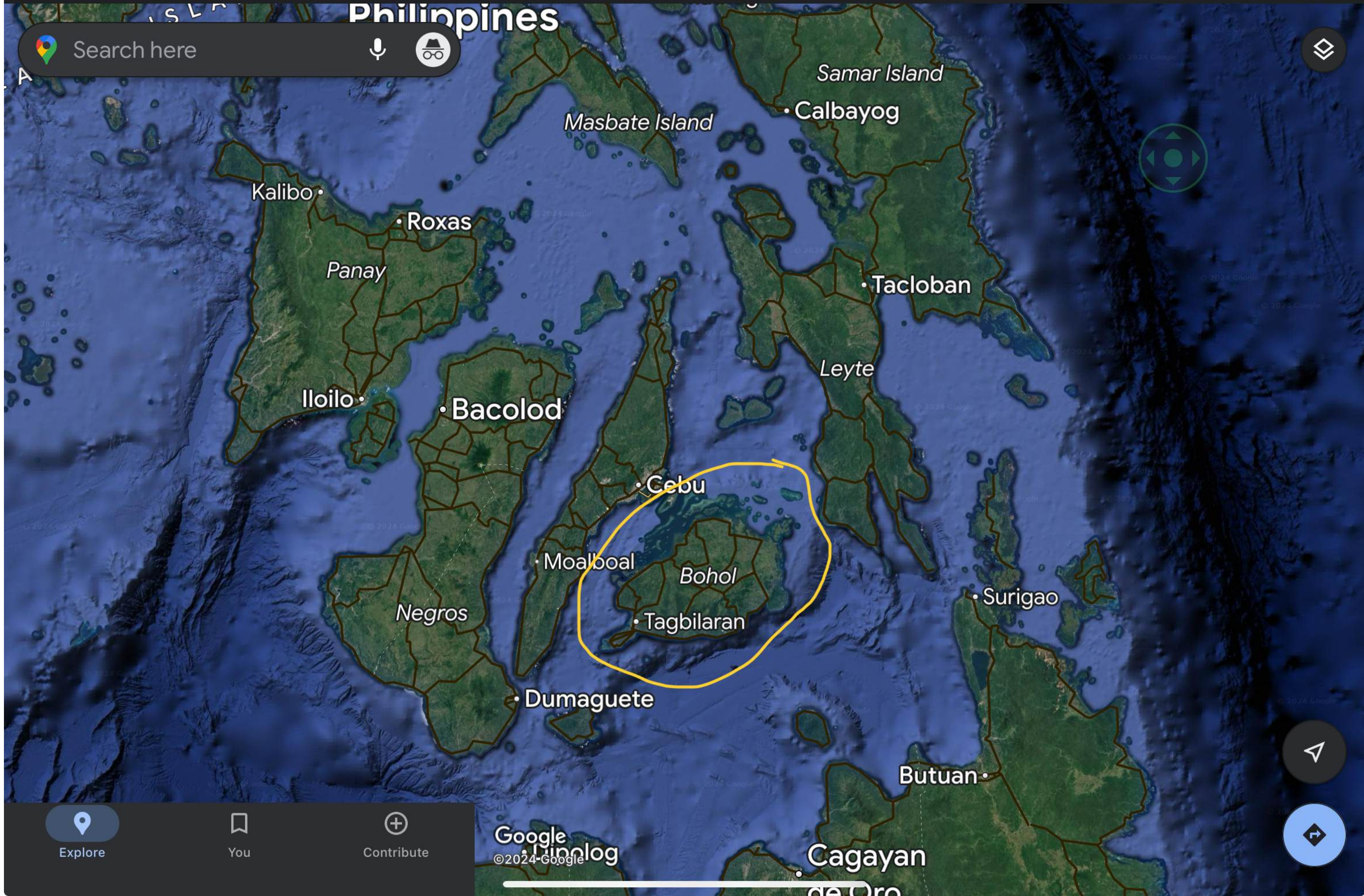
Contribute

Google ©2024 Google

Mindanao

Philippines

Search here



Explore

You

Contribute

Search here

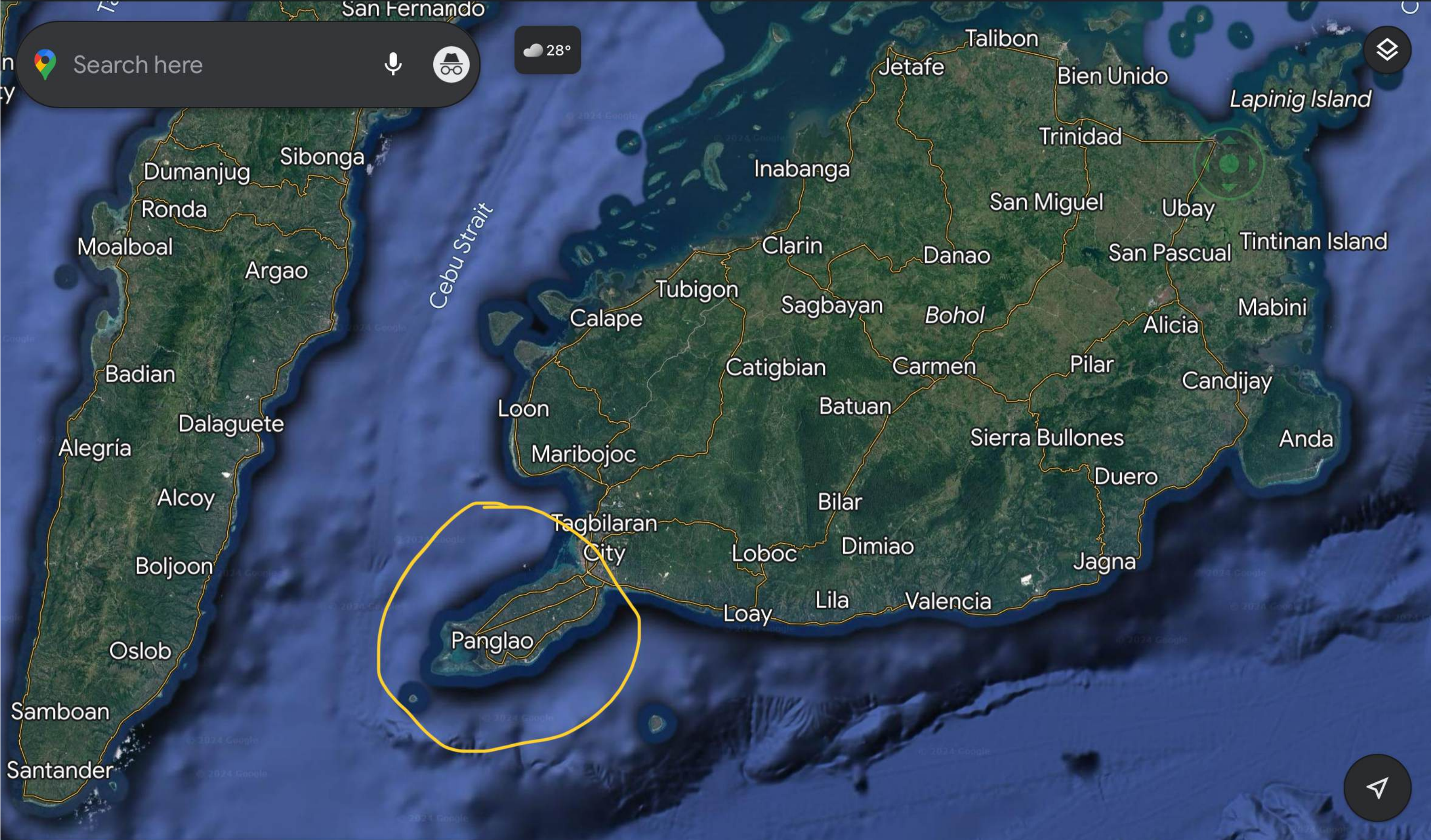
Microphone icon

Image search icon

28°

Weather icon

Layers icon



Explore


You

Contribute

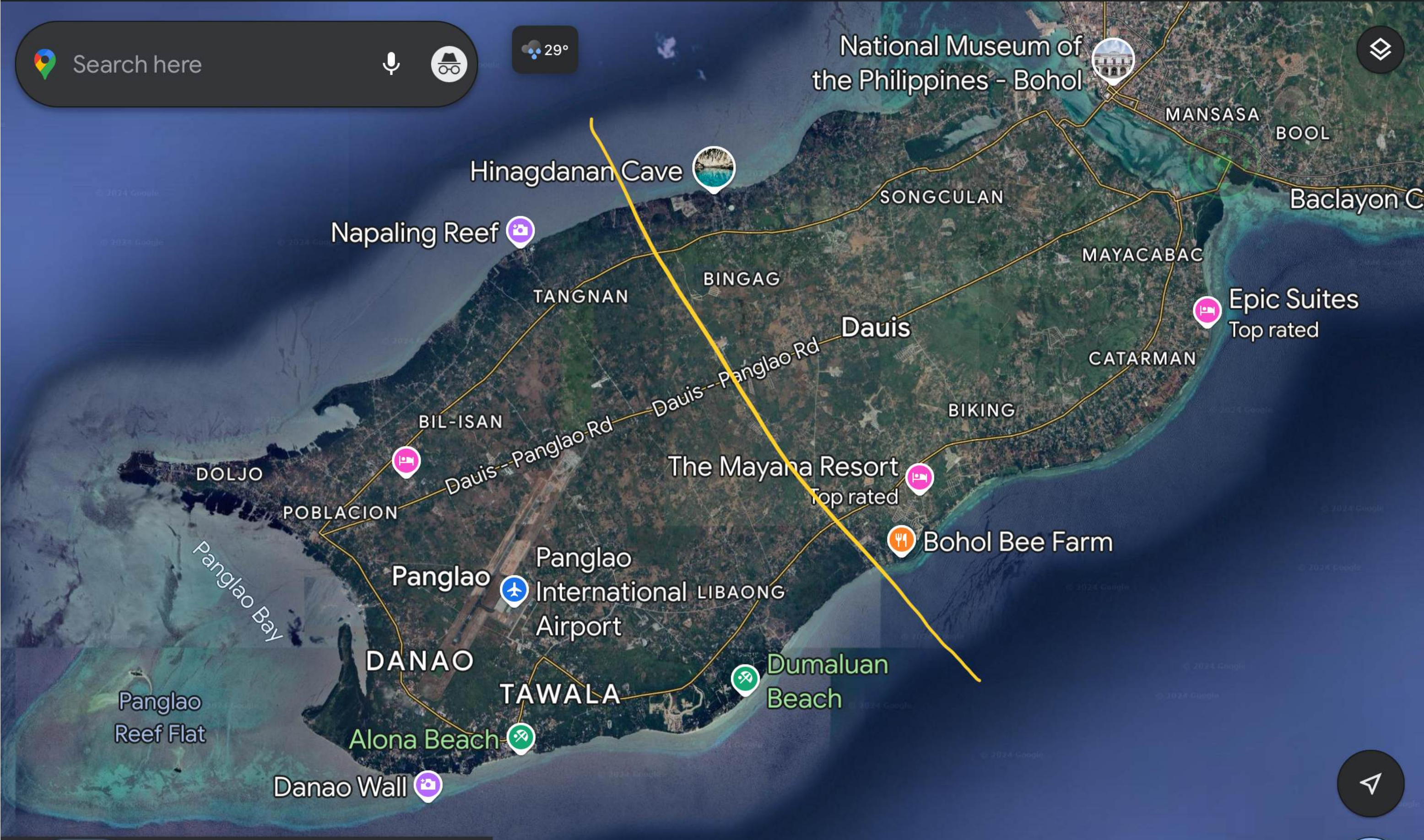
Compass icon

Navigation icon




Search here

29°

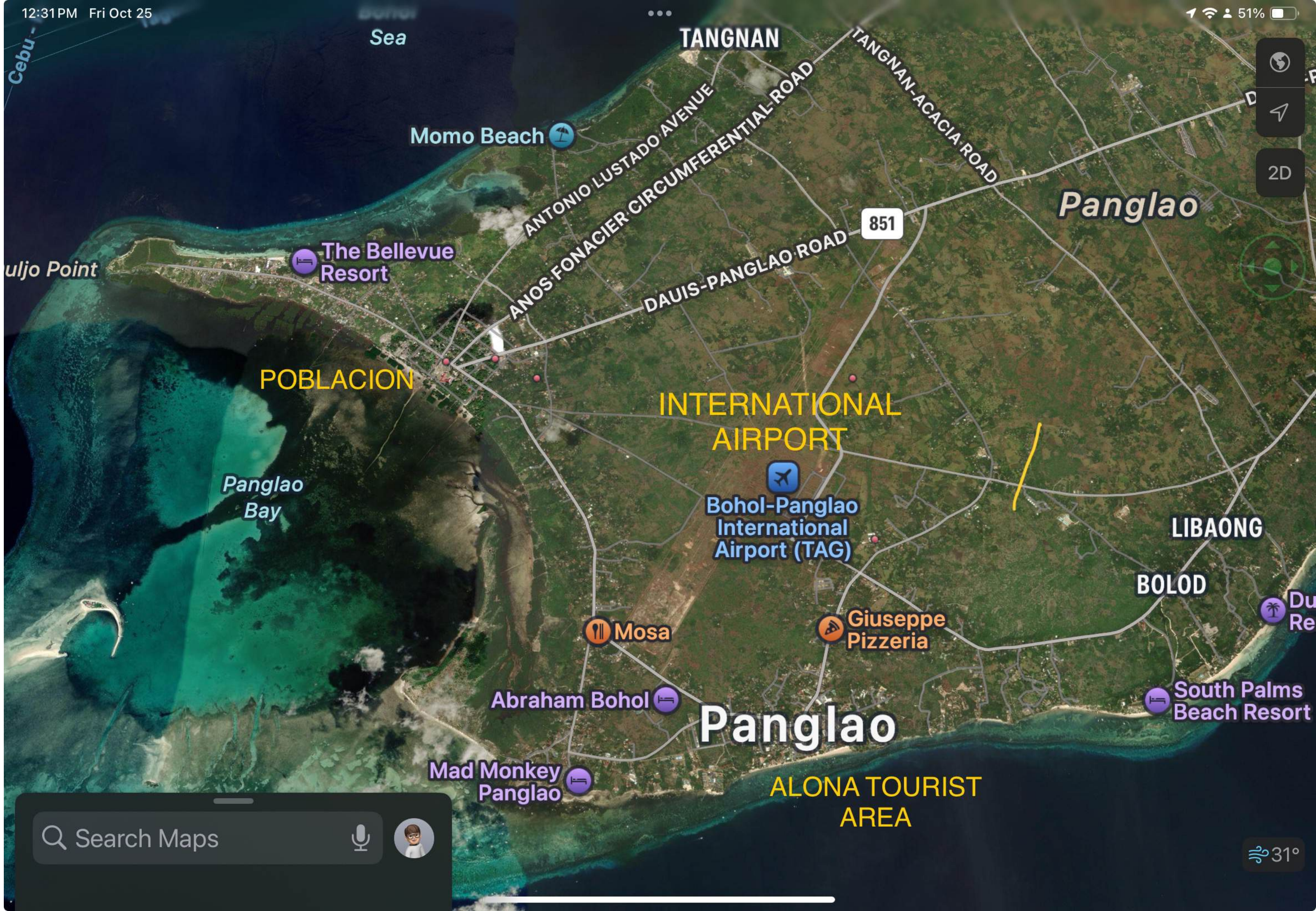
Explore You Contribute


Unique Locality

MOST POPULOUS AREA:

- POBLACION AREA
 - Municipal Hall
 - Market
 - Church
 - (Cockpit)
- ALONA TOURIST AREA
- PANGLAO INT'L AIRPORT



Search Maps



31°

PLANNED BUS ROUTES

All routes going to and from the city

Route No. 1

- From Poblacion, using the north road;

Route No. 2

- From Poblacion using the center road

Route No. 3-A

- From Poblacion using the south-eastern road, passing the airport

Route No. 3-B

- From Poblacion using the south-eastern road, passing villages

Traffic Signages

ROLE

- Regulates traffic flow and ensures road safety.
- Provides clear directions for both locals and tourists.

CURRENT FOCUS

- Reflective signages for better night visibility.

CHALLENGES

- Wear-and-tear require ongoing replacement efforts.

Traffic Signages



Traffic Signages



Traffic Signages



PURPOSE

- Encouraging eco-friendly transport and ensuring cyclist safety.

FUTURE EXPANSION

- Plans to expand bike lanes along the main roads and promote cycling as a sustainable mode of transportation.

Bike

Lanes

Bike Lanes



Bike Lanes



Solar- Powered Street Lights

BENEFITS

- Energy-efficient and environmentally friendly.
- Enhances road safety, especially in rural and tourist areas.

INSTALLED LOCATIONS

- Key tourist roads
- Residential area to improve night-time visibility.

EXPANSION PLANS

- Increasing installation in more barangays and remote areas.

Solar-Powered Street Lights



Solar-Powered Street Lights



Sidewalks

And

Pedestrian

Facilities

BENEFITS

- Promotes walkability and ensures safe separation between pedestrians and vehicles.

FOCUS AREAS

- Sidewalk improvements in densely populated areas and near commercial zones.

Sidewalks and Pedestrian

cil



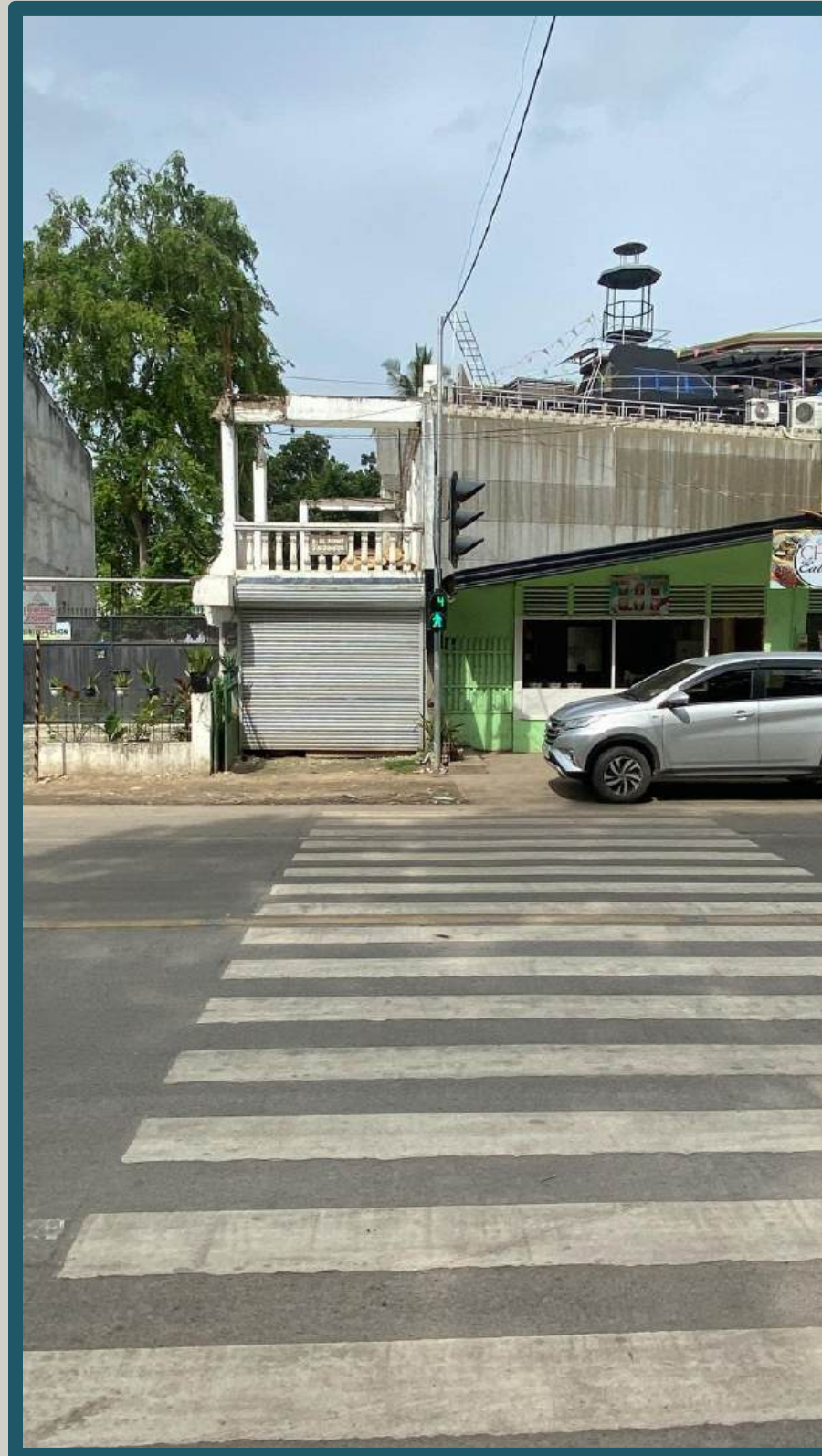
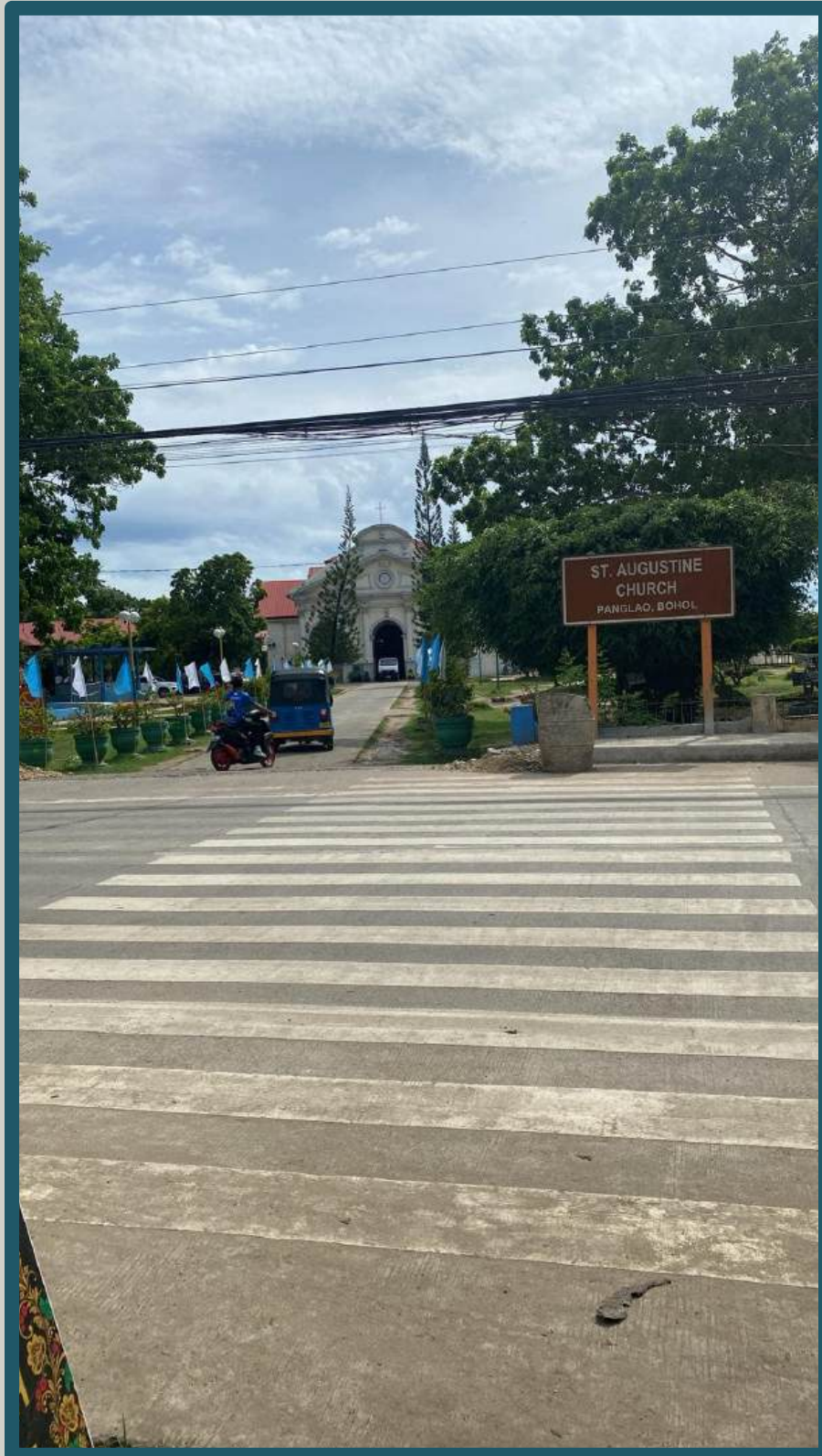
Sidewalks and Pedestrian



Sidewalks and Pedestrian Facilities



Sidewalks and Pedestrian



S

Drainage Systems

BENEFITS

- Minimizes road damage and ensures safe travel, especially during extreme weather conditions.

CURRENT FOCUS

- Focus on areas prone to water accumulation during rainy seasons.
- Improve drainage systems installed alongside major roads to prevent flooding.
- Regular maintenance programs to clear debris and ensure proper water flow.

Drainage Systems



Drainage Systems



Drainage Systems



DESCRIPTION

- Traffic lights have been installed at key intersections in Panglao to regulate vehicle flow and enhance road safety.

BENEFITS

- Helps manage congestion and reduce the risk of accidents, especially during peak hours.
- Ensures smoother traffic flow and prioritizes pedestrian safety.

Traffic Lights

Traffic Lights



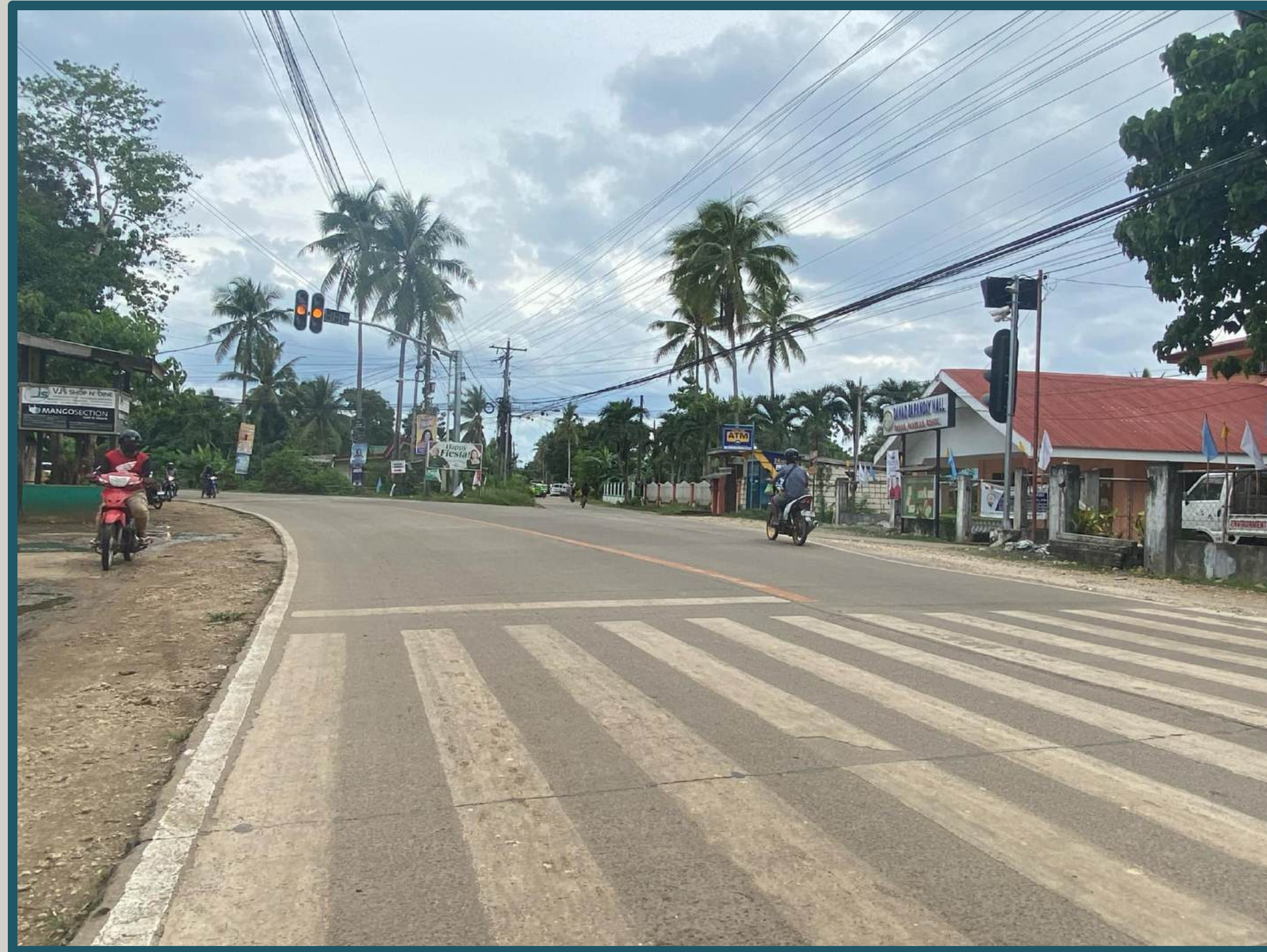
Traffic Lights



Traffic Lights



Traffic Lights



Traffic Lights



Traffic Lights



Key Points

- Panglao's road facilities are designed to support safety, sustainability, and accessibility for all users.
- Continuous upgrades and maintenance are crucial for the long-term development of the municipality's infrastructure.

Looking Ahead

- Future expansions include enhancing pedestrian-friendly areas and integrating more eco-friendly infrastructure solutions.



CHALLENGES

- Budgetary requirements
- Participation of the other municipality, that is in between Panglao and the Tagbilaran City

**"Roads are the
arteries through
which the
economy
pulses."**

— John F. Kennedy

**Thank
you**

